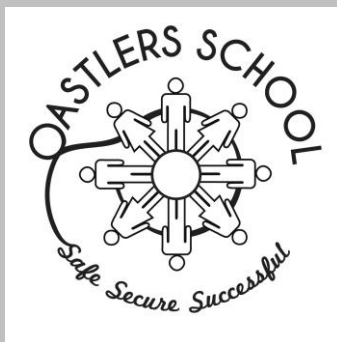



School Complaints Procedure Policy



Oastlers Policy

Approved by Governing Body On	January 2014
To be Reviewed On	January 2018
Signed on Behalf of the Governing Body	Robert Fairbairn 

School Complaints Procedure Policy

It is hoped that as a parent/carer, or any other interested parties, will not be in a position to have to make a formal complaint to the school. Sometimes, however, concerns do arise and the best option is always to resolve a concern as quickly as possible, informally. However, if the concern is not addressed satisfactorily, our policy for more formal complaints is available so that your concern can be addressed following our formal procedures.

General Principles:

- This procedure is intended to allow you to raise a concern or complaint relating to the school, or the services that it provides.
- An anonymous concern or complaint will not be investigated under this procedure, unless there are exceptional circumstances.
- To enable a proper investigation, concerns or complaints should be brought to the attention of the school as soon as possible. In general, any matter raised more than three months after the event, being complained of, will not be considered.

Raising a concern or complaint

1) Informal Stage

It is normally appropriate to communicate directly with the school office in the first instance. This may be by letter, by telephone or in person by appointment. Many concerns can be resolved by simple clarification or the provision of information and it is anticipated that most complaints will be resolved by this informal stage. A meeting request form is provided to assist you (Document 1).

In the case of serious concerns it may be appropriate to address them directly to the Headteacher (or to the Chair of the Governing Body, if the complaint is about the Headteacher).

If you are uncertain about who to contact, please seek advice from the school office or the Clerk to the governing body. The school office will provide you with contact details.

2) Formal Stage

If your concern or complaint is not resolved at the informal stage you may choose to put the complaint in writing and pass it to the Headteacher, who will be responsible for ensuring that it is investigated appropriately. If the complaint is about the Head Teacher, your complaint should be passed to the Clerk to the governing body, for the attention of the Chair of the governing body.

A Complaint Form is provided to assist you (Document 2).

You should include details which might assist the investigation, such as names of potential witnesses, dates and times of events, and copies of relevant documents.

It is very important that you include a clear statement of the actions that you would like the school to take to resolve your concern. Without this, it is much more difficult to proceed.

Please pass the completed form, in a sealed envelope to the school office. The envelope should be addressed to the Headteacher, or to the Clerk to the governing body, as appropriate.

The Headteacher (or Chair) may invite you to a meeting to clarify your concerns and to explore the possibility of an informal resolution. If you accept that invitation, you may be accompanied by a friend or relative, if you wish, to assist you in explaining the nature of your concerns.

It is possible that your complaint will be resolved through a meeting with the Headteacher (or Chair). If not, arrangements will be made for the matter to be fully investigated, using the appropriate procedure. In any case you should learn in writing, usually within 5 days of the school receiving your formal complaint, of how the school intends to proceed. This notification should include an indication of the anticipated timescale.

Any investigation will begin as soon as possible and when it has been concluded, you will be informed in writing of its conclusion.

If you are not satisfied with the manner in which the process has been followed, you may request that the governing body reviews the process followed by the school, in handling the complaint. Any such request must be made in writing to the clerk to the governing body, within 10 school days of receiving notice of the outcome, and include a statement specifying any perceived failures to follow the procedure. The procedure described below will be followed. A Review Request form is provided for your convenience.

Review Process

Any review of the process followed by the school will be conducted by a panel of three members of the governing body. This will usually take place within 10 school days of receipt of your request.

The review will normally be conducted through a consideration of written submissions, but reasonable requests to make oral representations should be considered sympathetically.

Revised and adopted by the Governing Body

Appendices:

- | | |
|------------|-----------------------|
| Document 1 | Meeting Request Form |
| Document 2 | Formal Complaint Form |
| Document 3 | Complaint Review Form |
| Document 4 | Procedure Flowchart |



Formal Complaint Form (Document 2)

Please complete this form and return it, via the school office, to the Headteacher (or Clerk to the governing body), who will acknowledge its receipt and inform you of the next stage in the procedure.

Your name:

Relationship with school (e.g. parent of a learner on the school roll):

Learner's name:

Your Address:

Telephone numbers

Daytime:

Evening:

e-mail address:

Please give concise details of your complaint, (including dates, names of witnesses etc...), to allow the matter to be fully investigated.:

You may continue on separate paper, or attach additional documents, if you wish.
Number of Additional pages attached:

What actions do you feel might resolve the problem at this stage?

Signature:

Date:

FOR SCHOOL USE

Date Form received: _____ Received by: _____

Date acknowledgement sent: _____

Acknowledgement sent by: _____

Complaint referred to:			
Date:			



Complaint Review Request Form (Document 3)

Please complete this form and return it to Headteacher (or Clerk to the Governing Body), who will acknowledge its receipt and inform you of the next stage in the procedure.

Your name:

Your Address:

Telephone numbers:

Daytime:

Evening:

e-mail address:

Dear Sir/Madam

I submitted a formal complaint to Oastlers School on and I am dissatisfied by the procedure that has been followed.

My complaint was submitted to.....and I received a response from..... on

I have attached copies of my formal complaint and of the response(s) from the school.

I am dissatisfied with the way in which the procedure was carried out, because:

You may continue on separate paper, or attach additional documents, if you wish.

Number of Additional pages attached:

Signature:

Date:

FOR SCHOOL USE

Date Form received:

Received by:

Date acknowledgement sent:

Acknowledgement sent by:

Request referred to:			
Date:			

Governing Body Meetings

Complaints Panel

If the school receives a formal complaint about one of the limited number of matters, that is not dealt with by another statutory process, it may be necessary to convene a governing body panel to consider the matter and formulate a response.

The complaint is likely to relate to matters such as:

- the content or the application of a governing body policy
- school facilities
- services that the school provides

If a governing body committee already has delegated power with respect to a policy that is being complained of, a panel of members from that committee should be convened. Otherwise the clerk should convene a panel of 3 governors, who have not previously been involved with the complaint.

The complainant should submit the details of their concerns, in writing, to the clerk. The clerk will seek similar written responses from the school, where this is necessary.

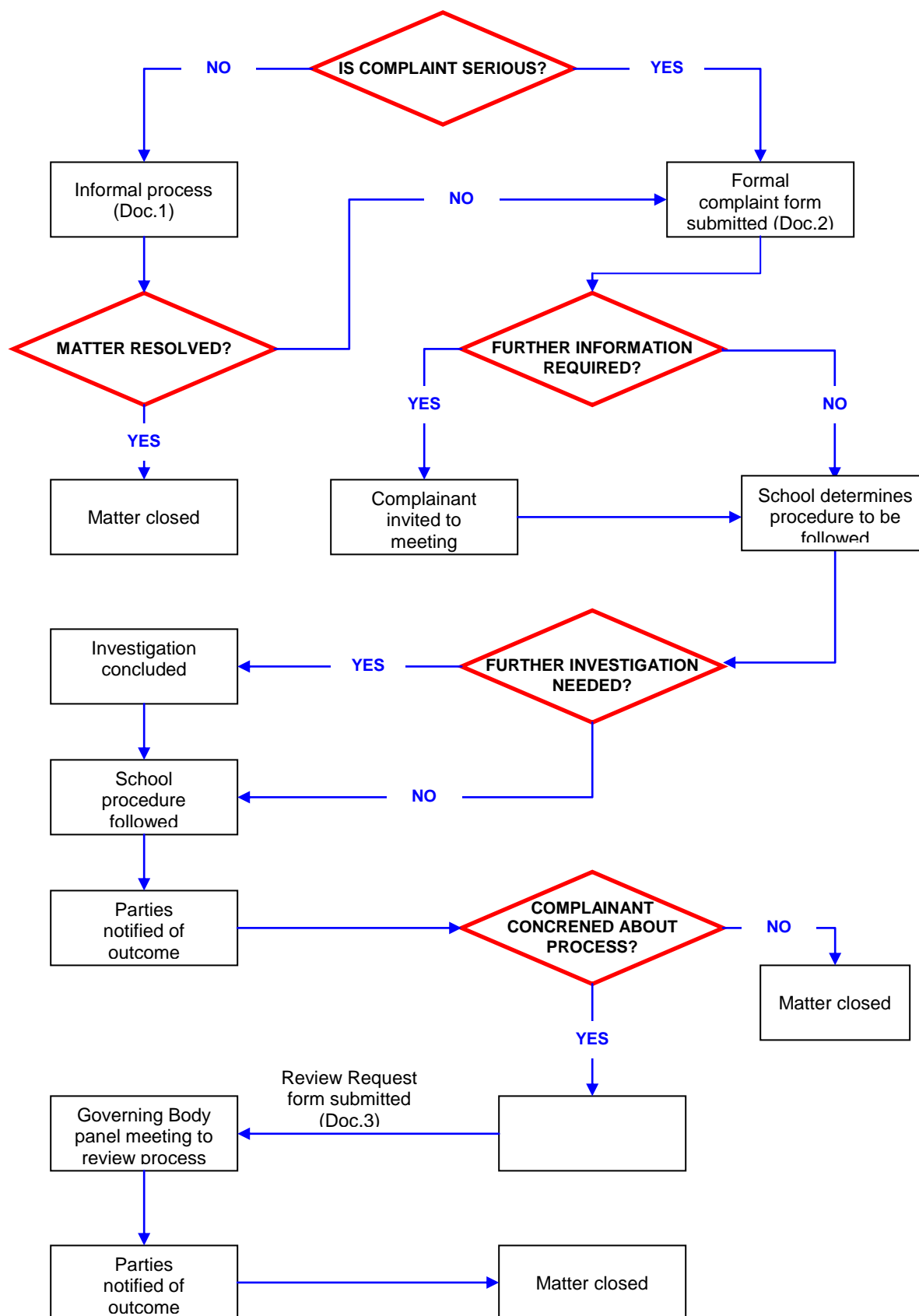
A meeting of the panel will take place, usually within 10 school days, to consider the matter. The complainant (who may be accompanied by a friend if they wish) and representative(s) from the school (who may also be accompanied by workplace colleagues or representatives from their professional associations) may be invited to attend this meeting in order to clarify the matter. As the panel meeting is intended to be investigatory, rather than adversarial, the persons giving evidence or making representations to the panel will normally attend separately.

When the panel has collected sufficient information, it will deliberate and then inform the complainant, the Headteacher and the governing body of the outcome, in writing.

Consideration of the complaint by the governing body and the school, save for any actions that are agreed, will terminate at this point.

If the complainant is not satisfied that the appropriate procedure has been followed, they may request a review of that process by another panel of the governing body.

Complaints Procedure Flowchart (Document 4)





Policy For Handling Unreasonably Persistent, Harassing Or Abusive Complainant

The Headteacher and Governing Body are fully committed to the improvement of our school. We welcome feedback from parents/carers and will always try to resolve any concerns as quickly as possible. There is a procedure for parents to use if they wish to make a formal complaint.

Sometimes, however, parents or carers pursuing complaints or other issues treat staff and others in a way that is unacceptable. Whilst we recognise that some complaints may relate to serious and distressing incidents, we will not accept threatening or harassing behaviour towards any members of the school community.

The aim of this leaflet is to provide information about our school policy on unreasonably persistent complainants or harassment of staff.

What do we mean by 'an unreasonably persistent complainant'?

An unreasonably persistent complainant may be anyone who engages in unreasonable behaviour when making a complaint. This will include persons who pursue complaints in an unreasonable manner.

Unreasonable behaviour may include:

- actions which are
 - out of proportion to the nature of the complaint, or
 - persistent – even when the complaints procedure has been exhausted, or
 - personally harassing, or
 - unjustifiably repetitious
- an insistence on
 - pursuing unjustified complaints and/or
 - unrealistic outcomes to justified complaints
 - pursuing justifiable complaints in an unreasonable manner (eg using abusive or threatening language; or
 - making complaints in public or via a social networking site such as Facebook; or
 - refusing to attend appointments to discuss the complaint.

What is 'harassment'?

We regard harassment as the unreasonable pursuit of issues or complaints, particularly if the matter appears to be pursued in a way intended to cause personal distress rather than to seek a resolution.

Behaviour may fall within the scope of this policy if:

- it appears to be deliberately targeted at one or more members of school staff or others, without good cause;
- the way in which a complaint or other issues is pursued (as opposed to the complaint itself) causes undue distress to school staff or others;
- it has a significant and disproportionate adverse effect on the school community.

What does the school expect of any person wishing to raise a concern?

The school expects anyone who wishes to raise concerns with the school to:

- treat all members of the school community with courtesy and respect;
- respect the needs of pupils and staff within the school;
- avoid the use of violence, or threats of violence, towards people or property;
- recognise the time constraints under which members of staff in schools work and allow the school a reasonable time to respond to a complaint;
- follow the school's complaints procedure.

Schools' responses to unreasonably persistent complaints or harassment

This policy is intended to be used in conjunction with the school's complaints procedure. Taken together, these documents set out how we will always seek to work with parents, carers and others with a legitimate complaint to resolve a difficulty.

However, in cases of unreasonably persistent complaints or harassment, the school may take some or all of the following steps, as appropriate:

- inform the complainant informally that his/her behaviour is now considered by the school to be unreasonable or unacceptable, and request a changed approach;
- inform the complainant in writing that the school considers his/her behaviour to fall under the terms of the Unreasonably Persistent Complaints/ Harassment Policy;
- require all future meetings with a member of staff to be conducted with a second person present. In the interests of all parties, notes of these meetings may be taken;
- inform the complainant that, except in emergencies, the school will respond only to written communication and that these may be required to be channelled through the Local Authority.

Physical or verbal aggression

The governing body will not tolerate **any** form of physical or verbal aggression against members of the school community. If there is evidence of any such aggression the school may:

- ban the individual from entering the school site, with immediate effect;
- request an Anti-Social Behaviour Order (ASBO);
- prosecute under Anti-Harassment legislation.
- call the police to remove the individual from the premises, under powers provided by the Education Act 1996.

Legitimate new complaints will always be considered, even if the person making them is (or has been) subject to the Unreasonably Persistent Complaints/ Harassment Policy. The school nevertheless reserves the right not to respond to communications from individuals subject to the policy.

Revised and adopted by the Governing Body September 2013